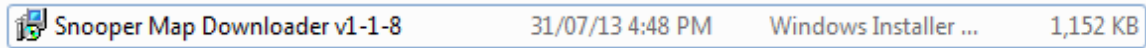
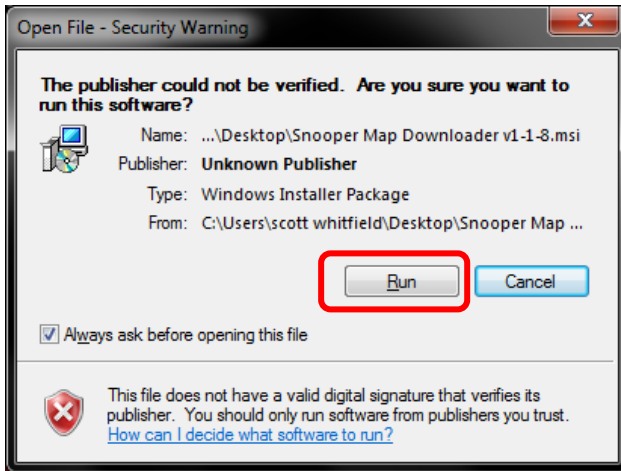


**Before Starting This Install, Please Make Sure Your Snooper Device Is NOT Connected To Your PC**

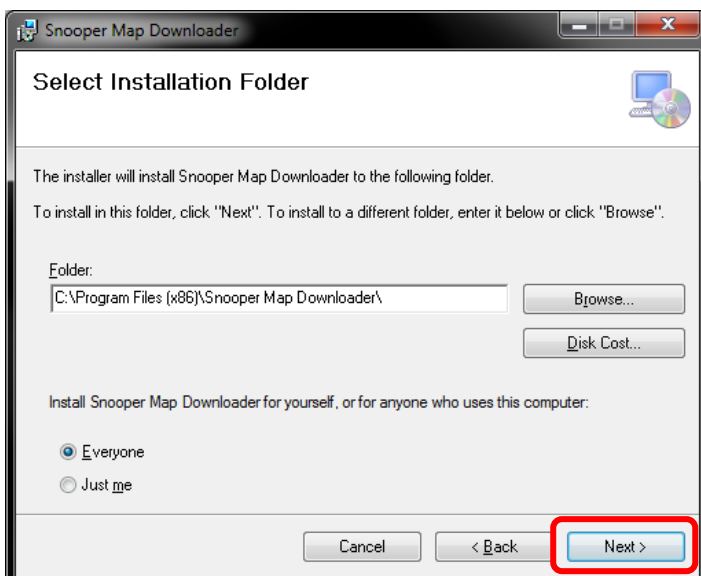
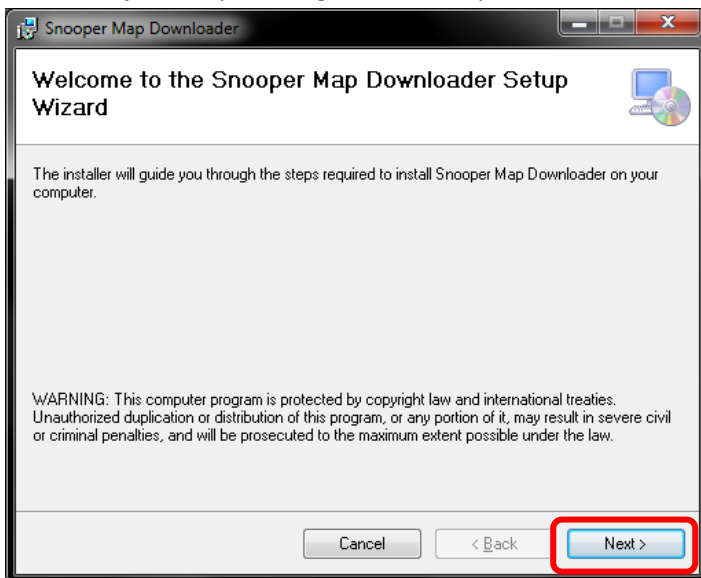
Double click the file below to start the Map Downloader installation.

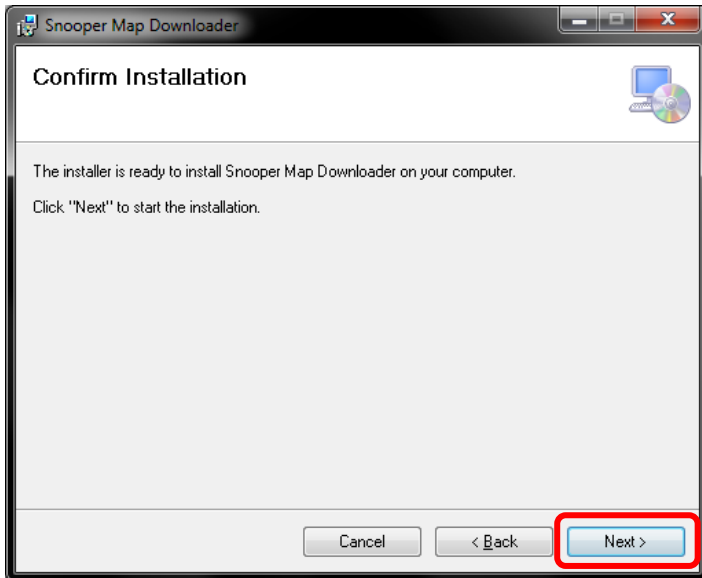


Please press the "Run" button when/if the screen below appears.



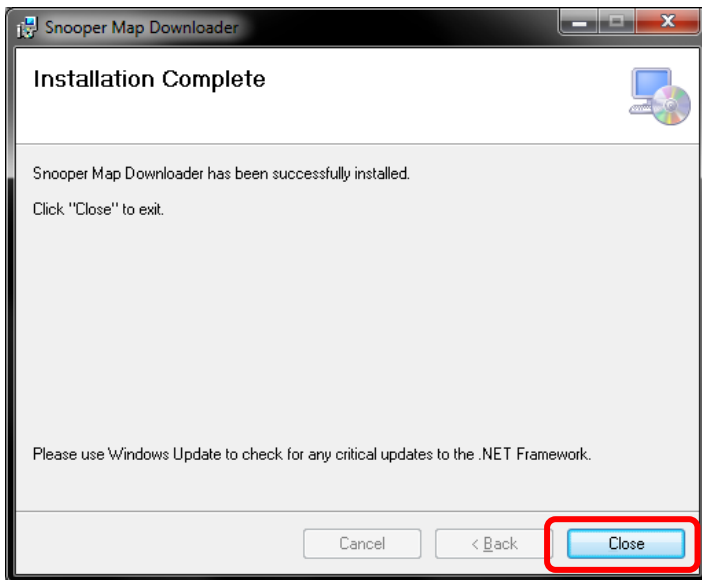
This will now begin the installation process. This is the first screen you will see; in this & the following windows, just keep clicking next to complete the install





m

Once you see the screen below, it means you now have the map downloader program installed on your PC.

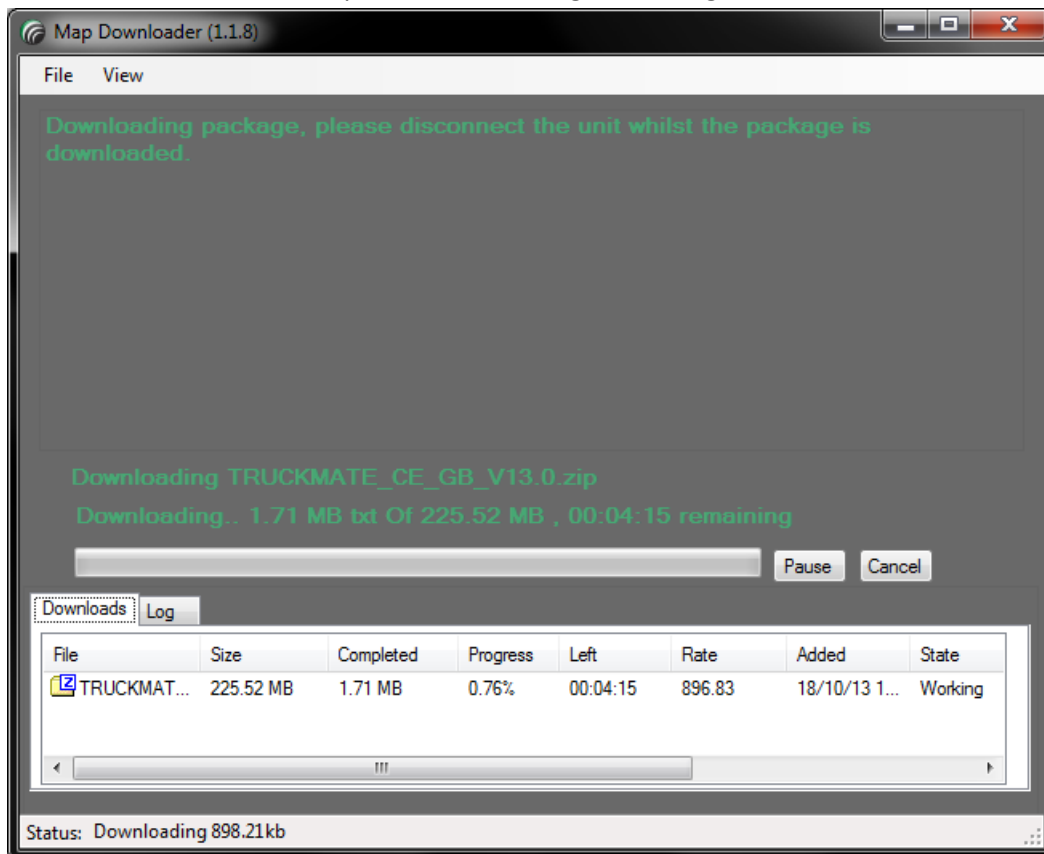


Go to your desktop and double click on the icon below.

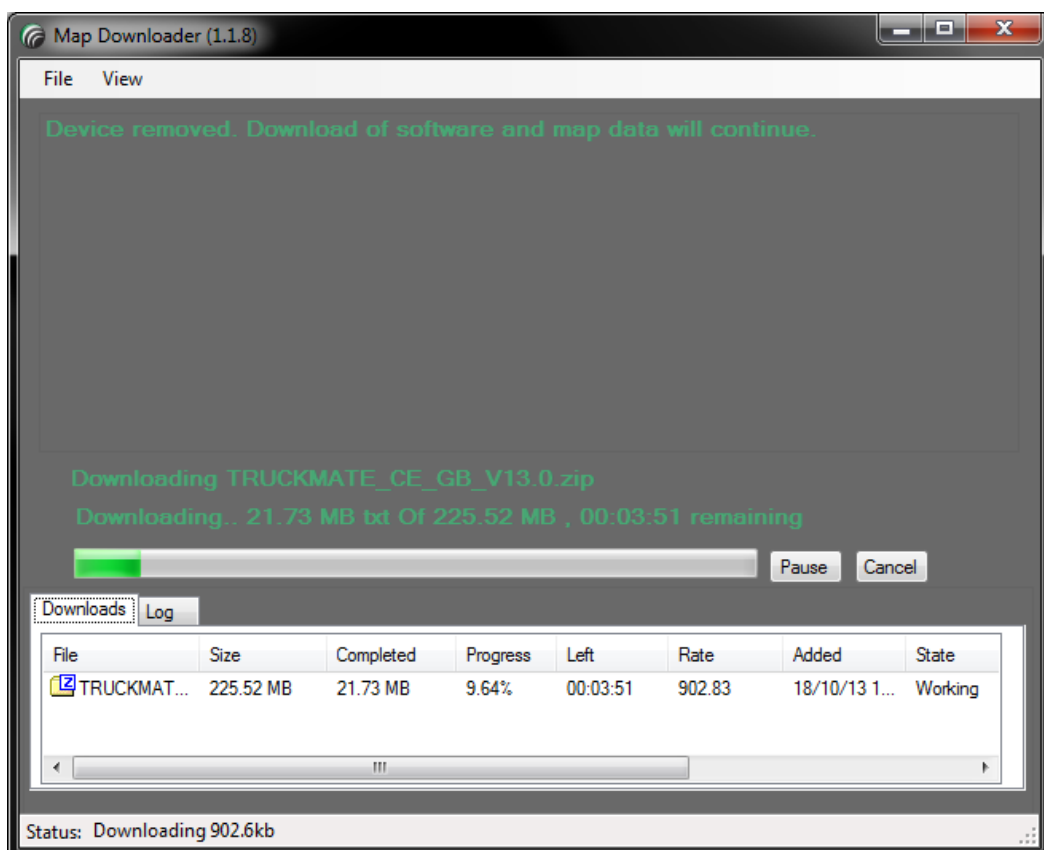




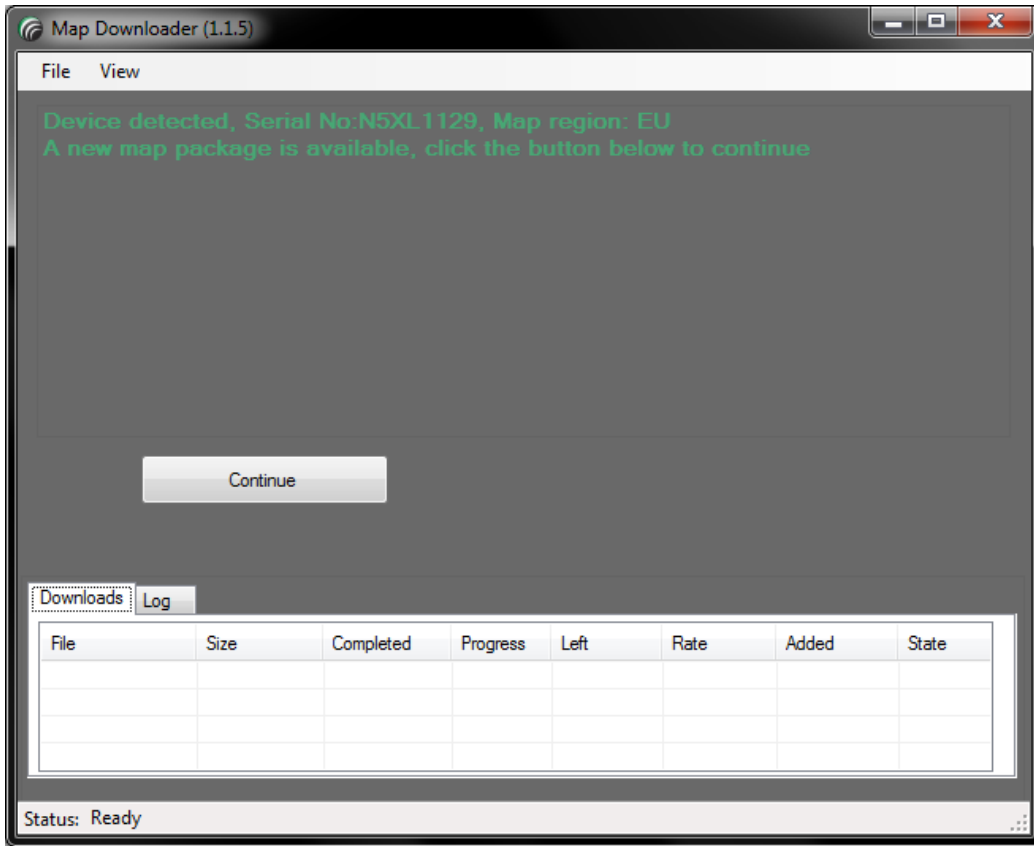
Click "Continue" and the map download will begin, showing the screen below



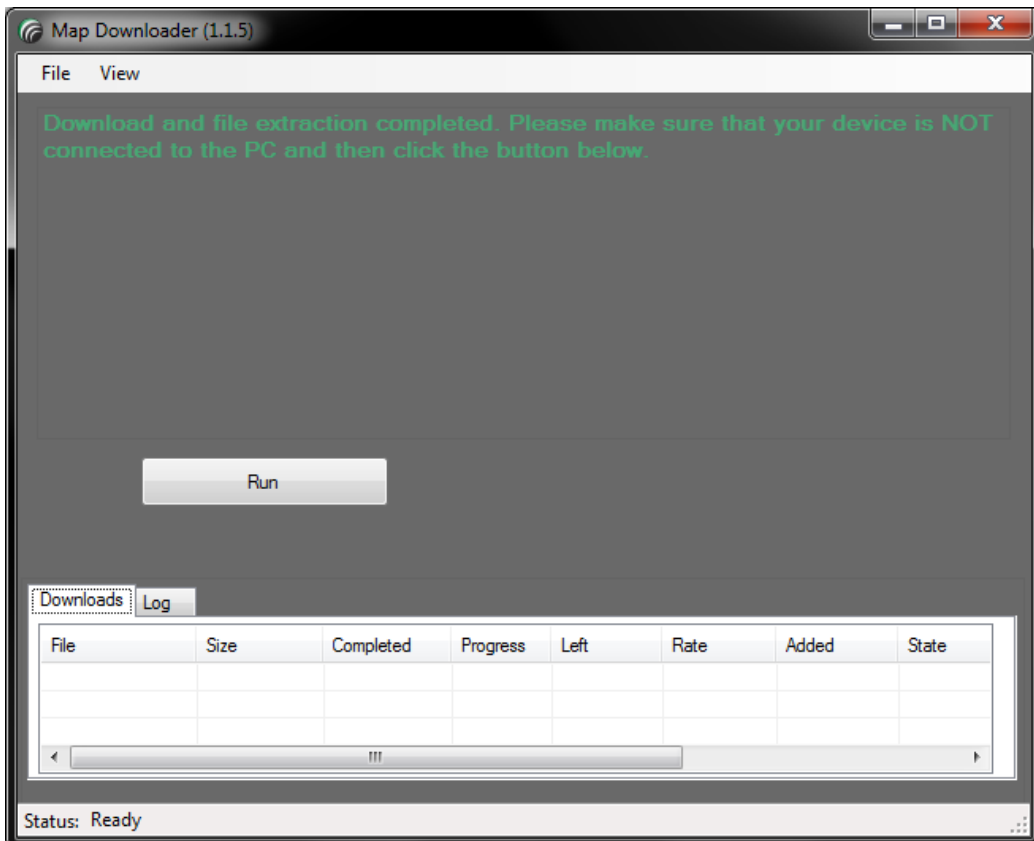
The download will take a few hours to complete. Please take note of the program asking you to **disconnect** your unit while the download is taking place. Remove the unit from your PC and the Map Downloader will show this screen.



Once fully downloaded, reconnect your device when asked to and you will see the same screen as before



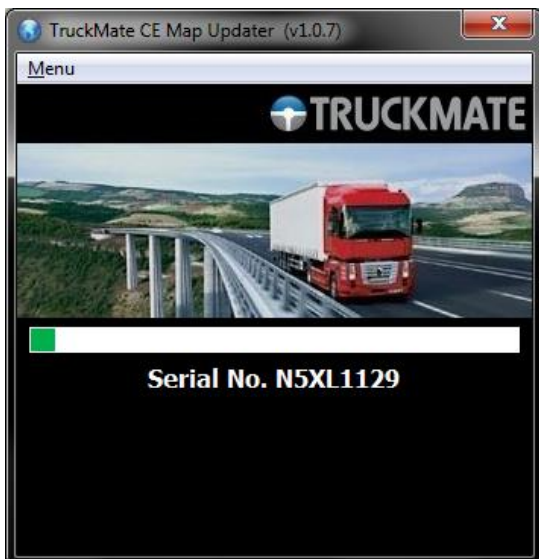
Click "Continue" to see the screen below asking you to run the update. Make sure you **disconnect** your unit before advancing as requested.



Choose your language and you will then see the screen below,



Make sure your unit is turned on first, then reconnect it to the PC to begin the update.



Leave the update to complete; then when finished, you will see the screen below.



Your unit has now been successfully updated.